

Workrite Pinnacle 2™

ergonomics®

Installation Instructions

! Do not remove arm from track.
Do not remove front end trim from track.

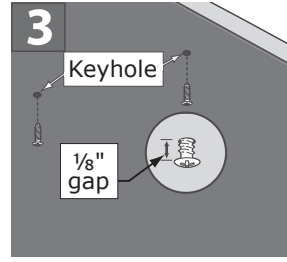
! To print at 100% scale, select "None" in Page Scaling menu in printer dialog box (see below for example)

Page Handling
Copies: 1 Collate
Page Scaling: None
 Auto-Rotate and Center
 Choose Paper Source by PDF page size

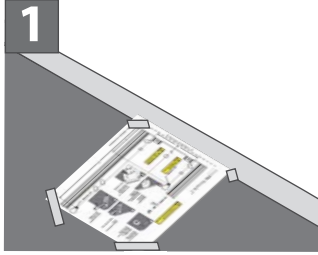
! Be careful not to drill through worksurface.

! Front edge of track may be recessed up to 2" from front edge of worksurface for increased stowability.

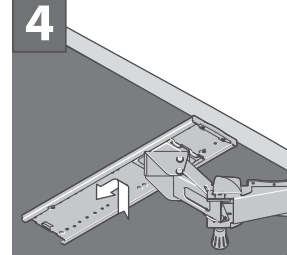
Tools Required: + 1/8" bit
Phillips head driver



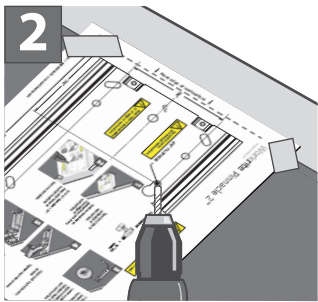
Install two #12 x 3/4" wood screws into keyhole pilot holes.
Leave a gap of approximately 1/8" between head of screw and worksurface.



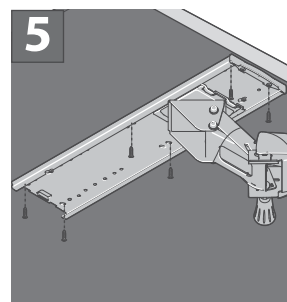
1 Tape template to underside of worksurface.
Position template so dashed line runs along front edge of worksurface.



4 Slide track keyholes onto screws.
Tighten keyhole screws.

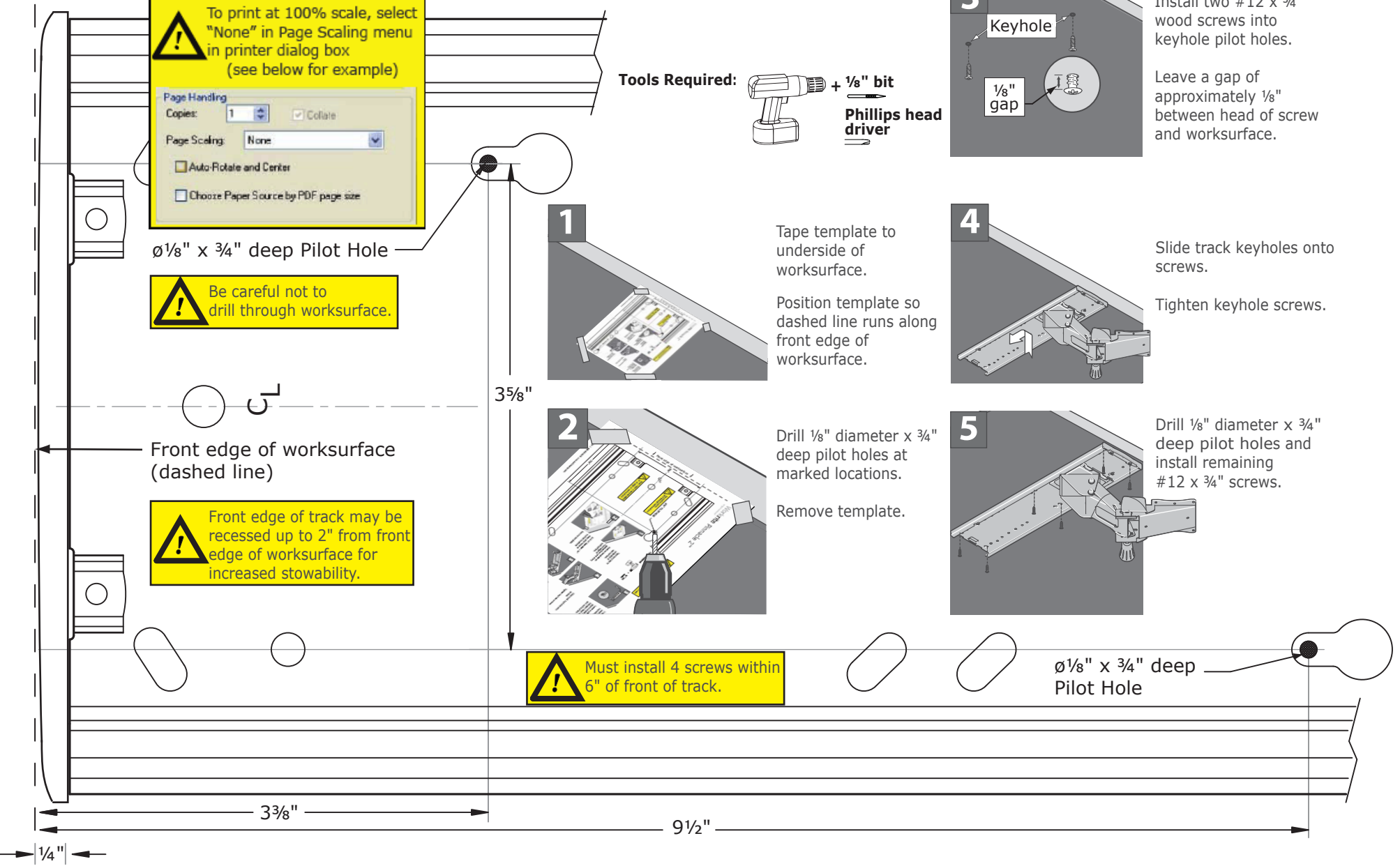


2 Drill 1/8" diameter x 3/4" deep pilot holes at marked locations.
Remove template.



5 Drill 1/8" diameter x 3/4" deep pilot holes and install remaining #12 x 3/4" screws.

! Must install 4 screws within 6" of front of track.



Ø1/8" x 3/4" deep Pilot Hole