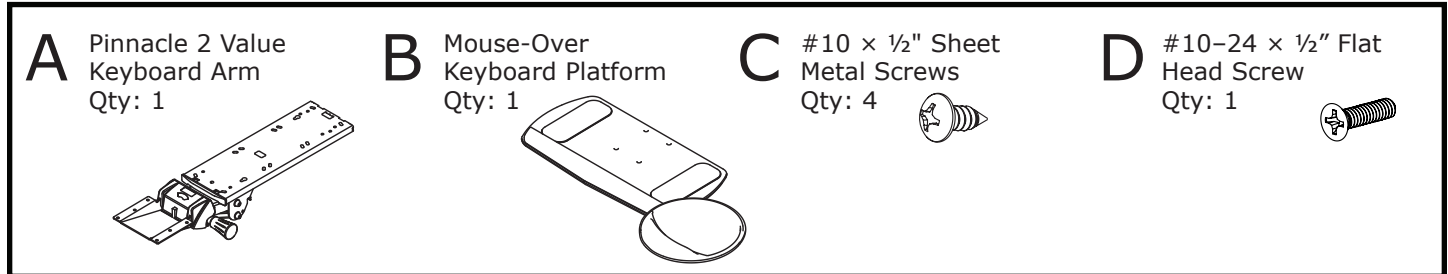


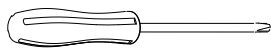
Workrite Assembly Instructions: Fundamentals AKP 02

ergonomics®

Parts



Verify that you have all the hardware needed for the assembly.



Phillips-head screwdriver

1

Mount the Keyboard Arm to the Worksurface

Use the instructions that came with the Keyboard Arm to mount arm under worksurface.

2

Attach Keyboard Platform to Keyboard Arm

Attach Keyboard Platform (B) to Arm (A) using the four Sheet Metal Screws (C) provided.

3

Attach Mouse Platform to Keyboard Platform

Slide the Mouse Platform on either the right or left side and attach with #10-24 × ¾" Flat Head Screw (D)

4

Place Mousing Surface on Keyboard Platform

Remove protective film from bottom of mouse pad and place on mousing surface.

