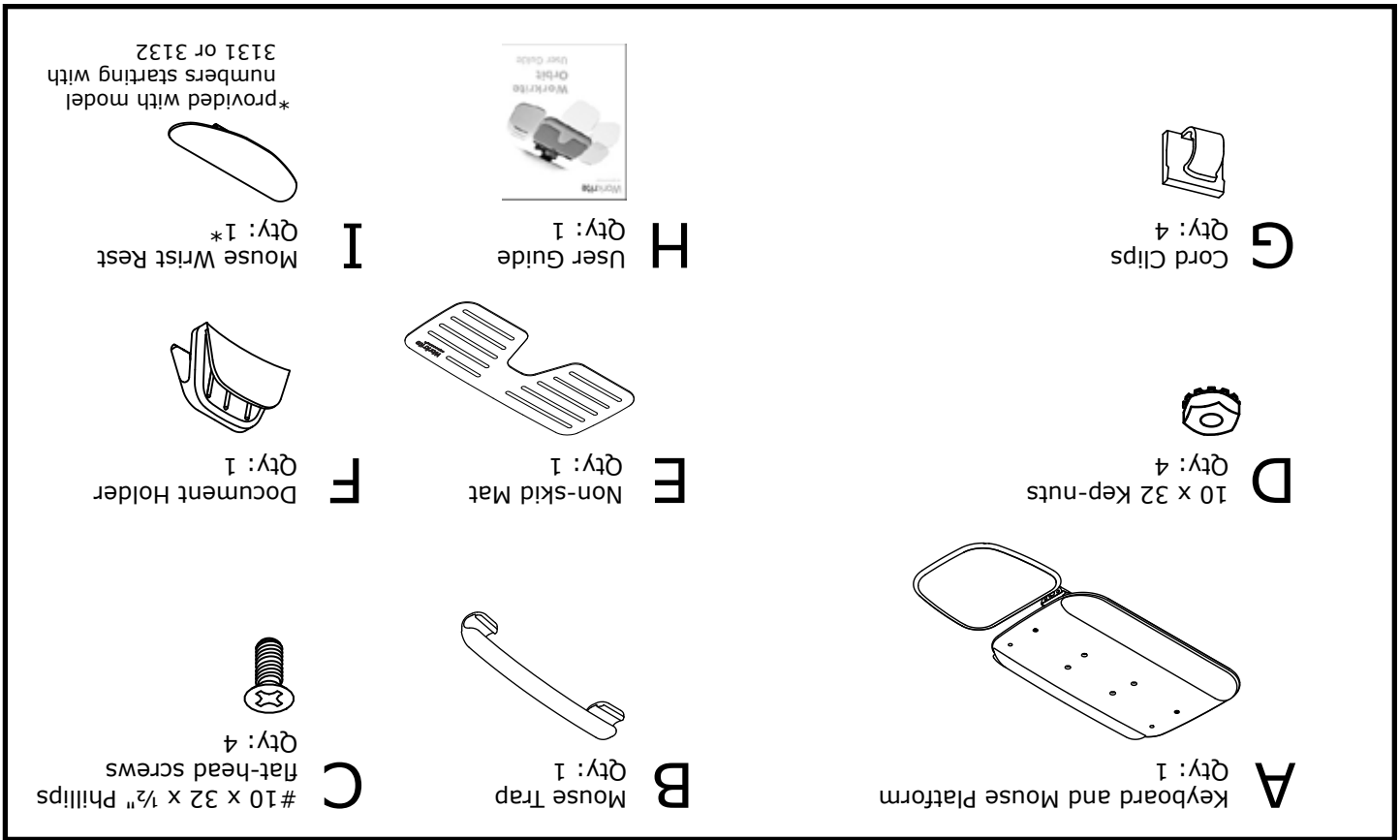
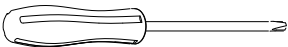


Workrite Orbit Parts



Installation Instructions for Workrite Orbit™

Verify that you have all the hardware needed for the assembly.



#2 Phillips-head Screwdriver

Replacement Parts:

Document Holder.....	3500131
Mouse Trap	3500130
Hardware Kit.....	4200125
Pop Beads.....	3300139
Keyboard Wrist Rest - Charcoal.....	4601711
Keyboard Wrist Rest - Cool Gray	4601712
Keyboard Wrist Rest - Charcoal Jel	4611711
Keyboard Wrist Rest - Cool Gray Jel.....	4611712
Mouse Wrist Rest - Charcoal	3120-11
Mouse Wrist Rest - Cool Gray.....	3120-12
Mouse Wrist Rest - Charcoal Jel	3120-11J
Mouse Wrist Rest - Cool Gray Jel.....	3120-12J



1 Slide Mouse Trap onto back edge of Mouse Platform.

2 Attach Platform to Track Arm using four Screws and Kep-nuts provided.

Note: If installing on Locking Lever Arm, use longer bolts provided with the Locking Lever Arm - not the screws in this kit.



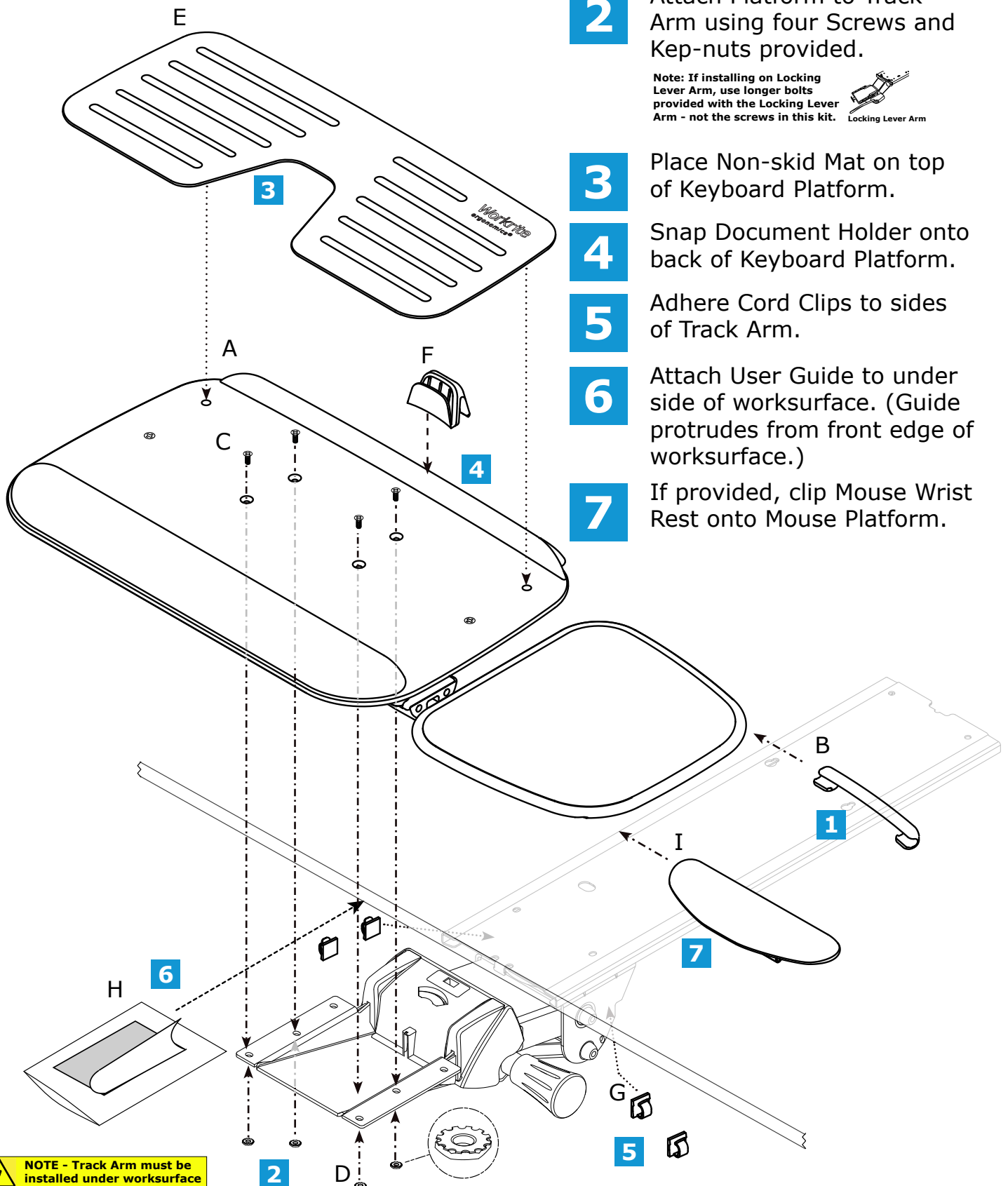
3 Place Non-skid Mat on top of Keyboard Platform.

4 Snap Document Holder onto back of Keyboard Platform.

5 Adhere Cord Clips to sides of Track Arm.

6 Attach User Guide to under side of worksurface. (Guide protrudes from front edge of worksurface.)

7 If provided, clip Mouse Wrist Rest onto Mouse Platform.



NOTE - Track Arm must be installed under worksurface before attaching Platform