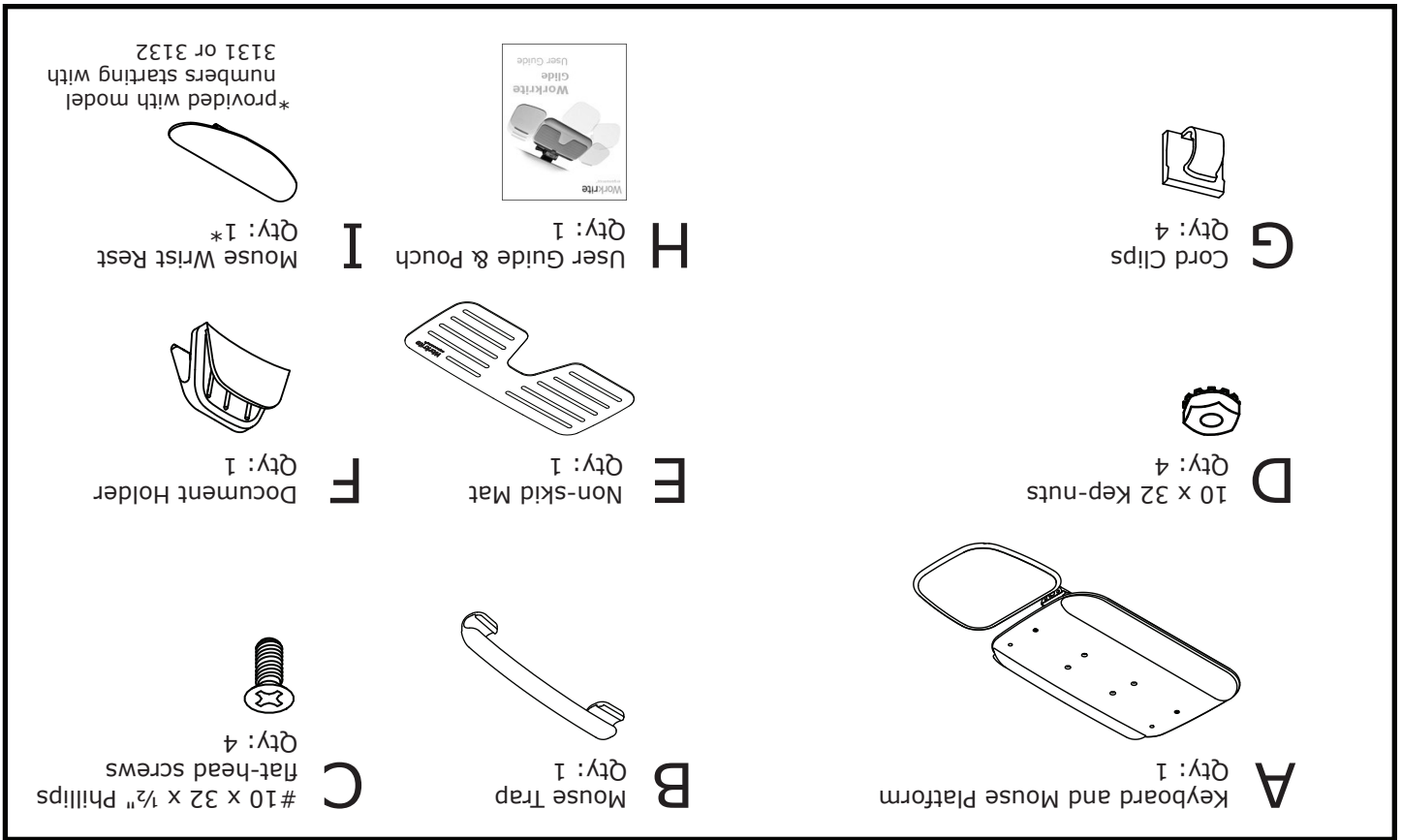
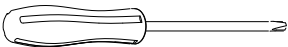


## Workrite Glide Parts



## Installation Instructions for Workrite Glide™

Verify that you have all the hardware needed for the assembly.

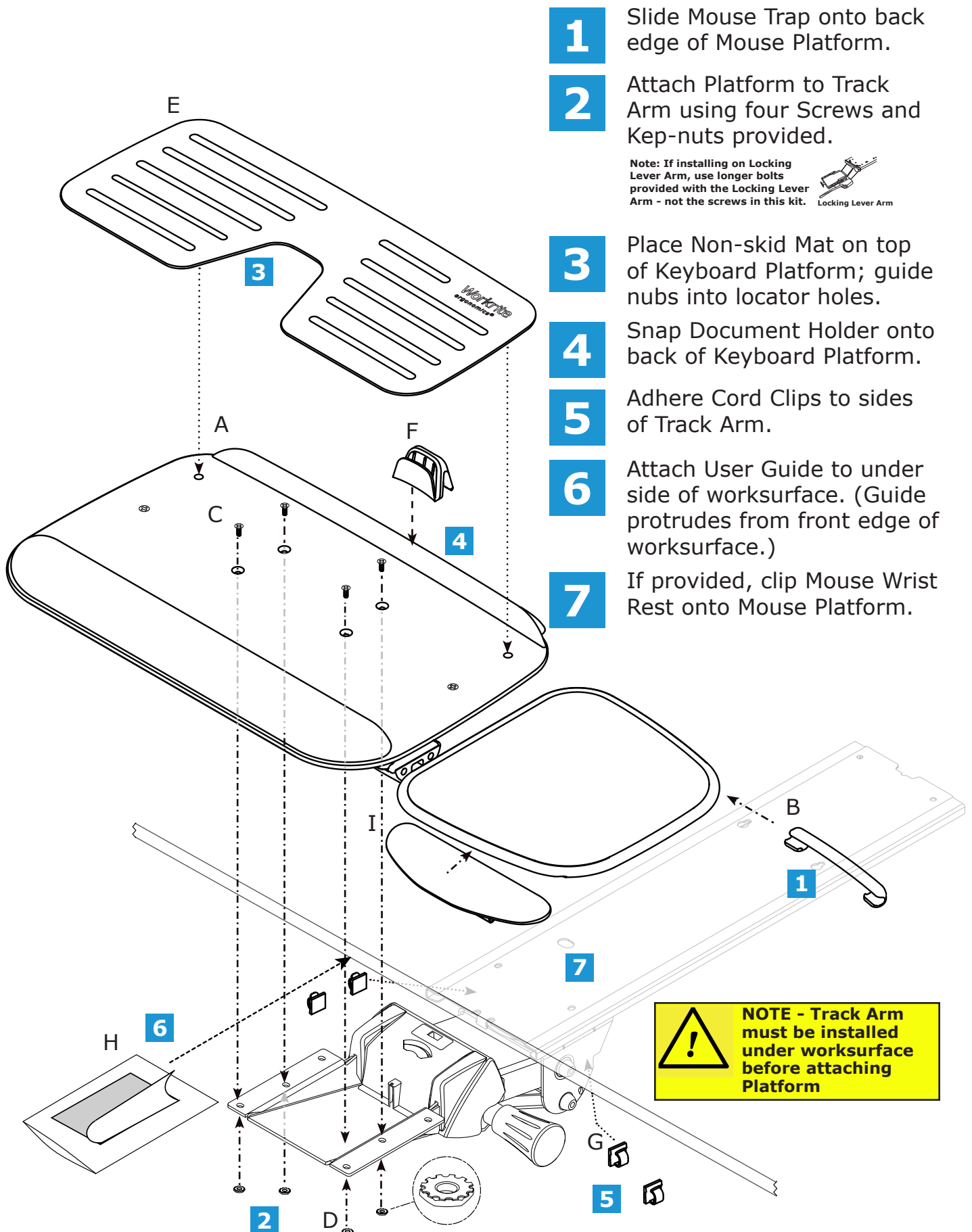


#2 Phillips-head Screwdriver

### Replacement Parts:

Document Holder .....	3500131
Mouse Trap .....	3500130
Hardware Kit .....	4200125
Pop Beads .....	3300139
Keyboard Wrist Rest - Charcoal .....	4601711
Keyboard Wrist Rest - Cool Gray .....	4601712
Keyboard Wrist Rest - Charcoal Jel .....	4611711
Keyboard Wrist Rest - Cool Gray Jel .....	4611712
Mouse Wrist Rest - Charcoal .....	3120-11
Mouse Wrist Rest - Cool Gray .....	3120-12
Mouse Wrist Rest - Charcoal Jel .....	3120-11J
Mouse Wrist Rest - Cool Gray Jel .....	3120-12J





**1** Slide Mouse Trap onto back edge of Mouse Platform.

**2** Attach Platform to Track Arm using four Screws and Kep-nuts provided.

Note: If installing on Locking Lever Arm, use longer bolts provided with the Locking Lever Arm - not the screws in this kit.



**3** Place Non-skid Mat on top of Keyboard Platform; guide nubs into locator holes.

**4** Snap Document Holder onto back of Keyboard Platform.

**5** Adhere Cord Clips to sides of Track Arm.

**6** Attach User Guide to under side of worksurface. (Guide protrudes from front edge of worksurface.)

**7** If provided, clip Mouse Wrist Rest onto Mouse Platform.

**NOTE - Track Arm must be installed under worksurface before attaching Platform**