

ElectraLift™

Use of Draw Bolts for Joining of Multi-Part Tops

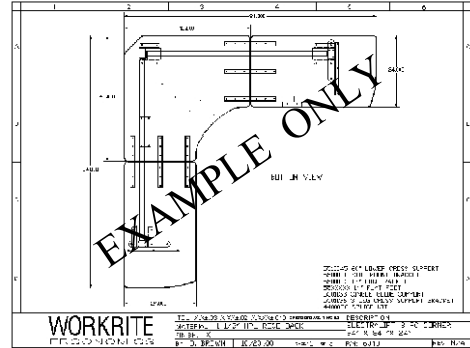
To join WorkRite manufactured tops, the following items are included. Refer to the included CAD drawing of your specific model for quantity and location of joining hardware.

AA) Draw Bolts



QTY. 2 to 3 per joint

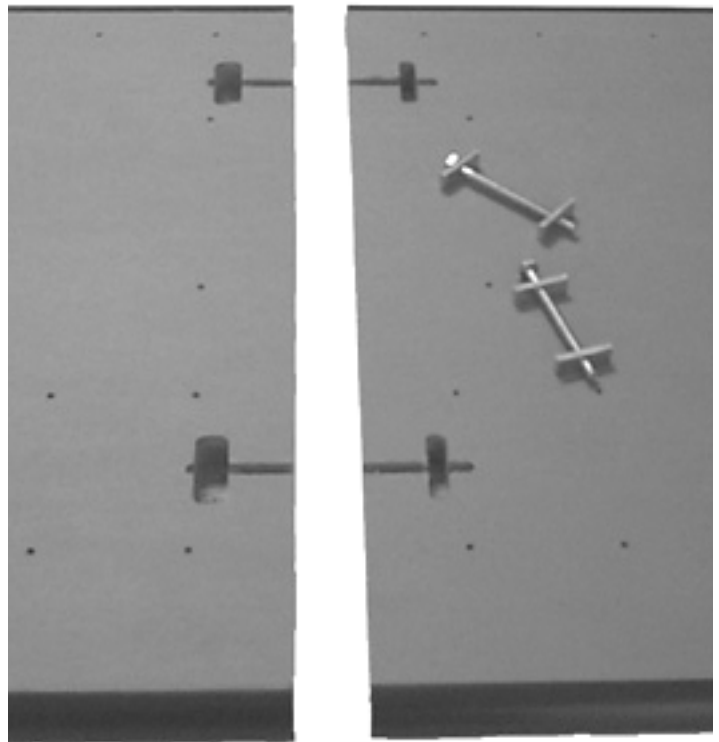
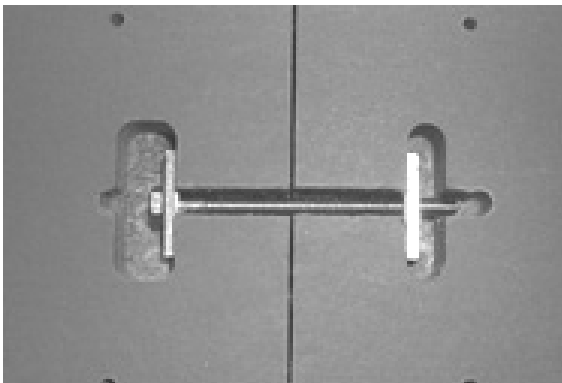
BB) CAD Drawing



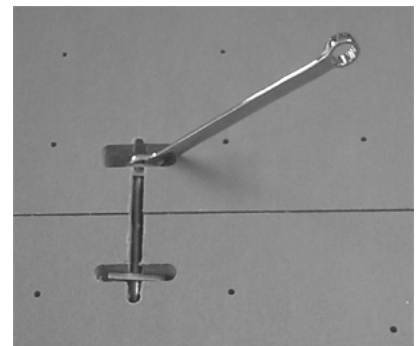
QTY. 1

Step 1.) Place work surfaces upside down on floor or flat surface so that the edges are straight and corners are aligned.

Step 2.) Put Draw Bolts (CC) into machined slots. The bolt end with the head goes into the larger of the slots. Depending on the model or top configuration, the number of Draw Bolts may differ.



Step 3.) Tighten the Draw Bolts using a 7/16" open end wrench. Be careful to align the front and rear edges of the work surface.



CAUTION: If your table model includes Splice Brackets, then refer to the instruction titled "Joining of Multi-Part Tops" before continuing the assembly of your system.