

ElectraLift™

Joining of Multi-Part Tops

To join work surfaces, the following items are included. Refer to the included CAD drawing of your specific model for quantity and approximate location of joining hardware.

Note: In some instances a WorkRite PinnacleArm™ or BudgetArm™ track may be substituted for the splice brackets. For tops manufactured by WorkRite, the holes for this option will be pre-drilled.

AA) Joint Splice Bracket



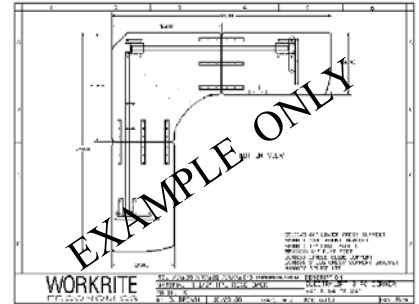
QTY. 2 to 3 per joint

BB) #12 x 3/4" Wood Screws



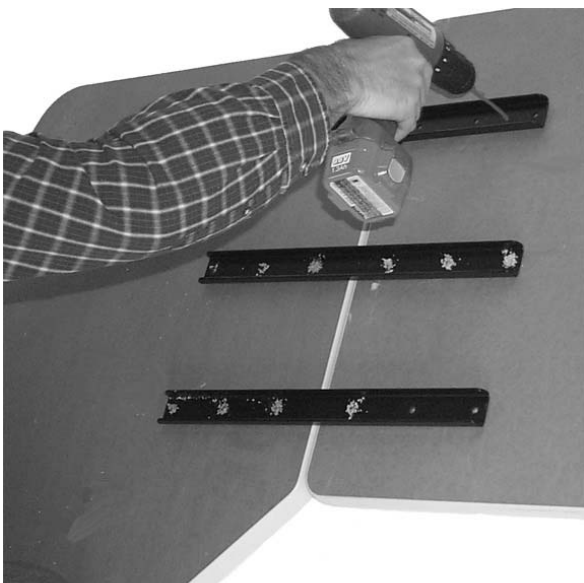
QTY. 6 per splice bracket

CC) CAD Drawing



QTY. 1

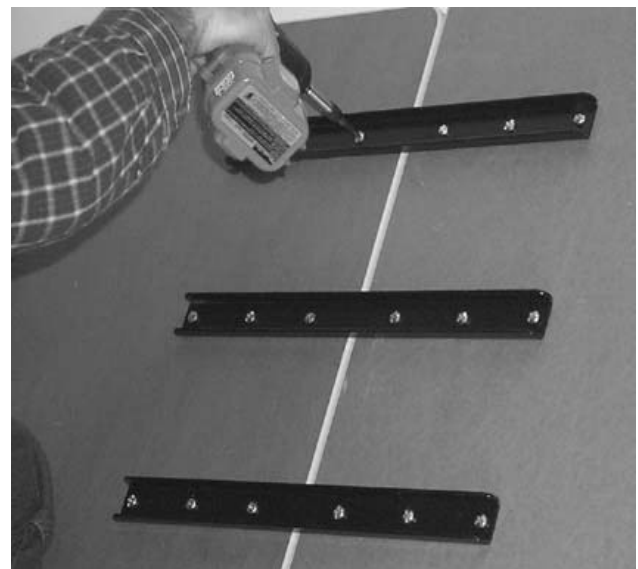
Step 1.) Place work surfaces upside down on floor or flat surface so that the edges are straight and corners are aligned. Evenly space Splice Brackets (AA) across joint. (Refer to CAD drawing for quantity and approximate location.) Factory direct tops are pre-drilled for your convenience. If this is the case with your top then skip to Step 4.



Step 2.) Use a pencil to mark hole locations.

Step 3.) Use a 5/32" diameter drill bit and drill holes 3/4" deep.

Be careful not to drill through.



Step 4.) Use the #12 x 3/4" Wood Screws (BB) to fasten down the Joint Splice Brackets (AA).

CAUTION: When turning the work surface over after joining, be careful to support entire surface. Joints are designed to support in a flat position. Un-even lifting or twisting when moving can damage the joint fastening hardware and or the work surface.

1500006