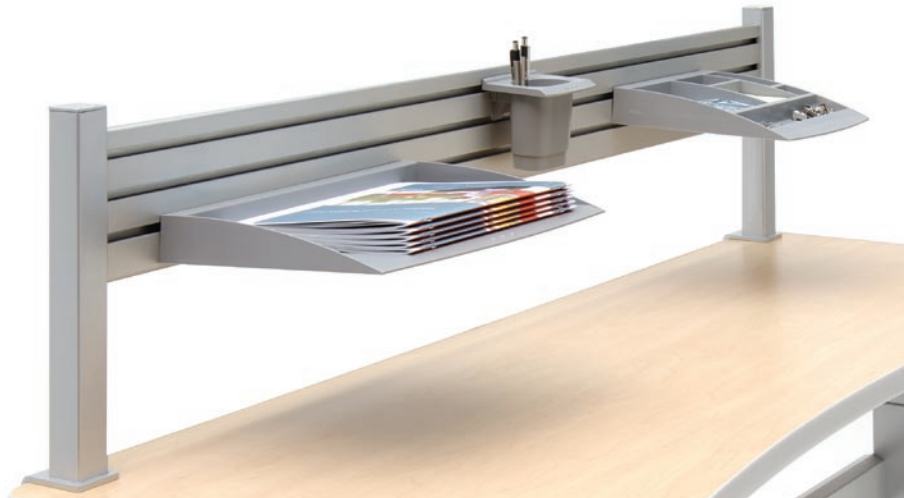


Sierra Tool Bar

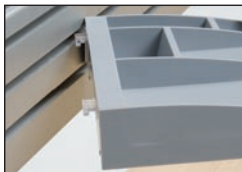
Adjustable Height Workcenters—Accessories



Integrated tool bar clears up work surface



Keep tools and supplies within easy reach



Quickly reposition accessories as needs change



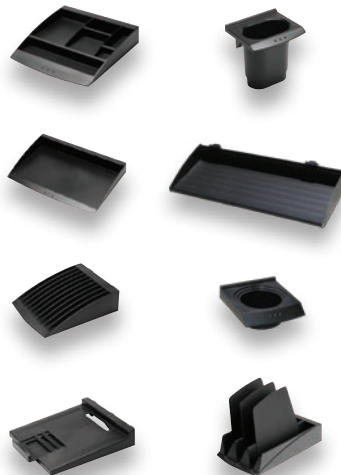
Sierra Tool Bar installs in minutes

Position Work Tools for Maximum Productivity

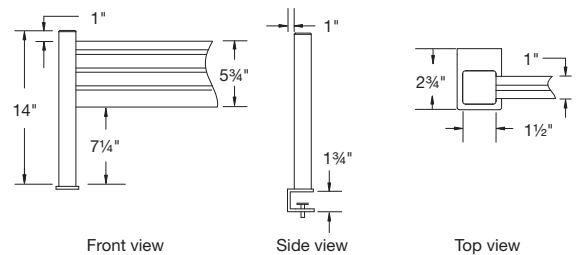
The sleek tool bar and stylish accessories are the next step up in creating a productive, comfortable work environment. Lift everyday work tools off the desktop, freeing up valuable real estate. The Sierra Tool Bar works with virtually all shapes and sizes of our award winning Workrite Sierra™ series of workcenters.

Tool Bar Accessories

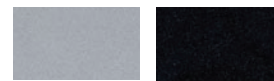
Available in silver or black, see reverse for details



Specifications



Available Sierra Tool Bar colors:

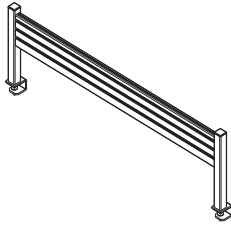


Sierra Silver (S) Charcoal (C)

At Workrite we believe every body has a right to work comfortably and safely for maximum productivity. You can trust Workrite, as 75% of Fortune 100 companies have, for solutions that fit today's diverse range of workers.

Sierra Tool Bar Adjustable Height Workcenters—Accessories

Sierra Tool Bar



- Includes 5/8" extruded tool bar panel with three slots for attaching storage accessories
- Slots are on both sides of tool bar
- SwingArm mounting adaptor available
- Available in Sierra silver or charcoal
- Clamp mounts to worksurfaces from 1/2" to 1 1/2" thick
- Quickly secure posts to worksurfaces using Allen key provided
- See chart below to specify model number

Also works with Sonoma and Proliftix workcenters

Model #	Finish	Weight	LEED % ♻️
970-22-	☐	11	14
970-28-	☐	12	15
970-31-	☐	12	15
970-34-	☐	13	16
970-40-	☐	14	16
970-46-	☐	15	17
970-52-	☐	16	17
970-58-	☐	17	18
970-64-	☐	18	18
970-70-	☐	19	19

Finish: C - Charcoal, S - Sierra Silver

Accessories

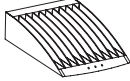
	Color	Model #	Weight
Cup Holder	Black	95212-B	1
	Silver	95212-S	1
5" W x 2" H x 5" L			



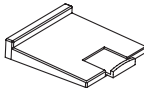
	Color	Model #	Weight
Pen Holder	Black	95204-B	1
	Silver	95204-S	1
4" W x 4" H x 3 1/2" L			



	Color	Model #	Weight
CD Holder	Black	95205-B	1
	Silver	95205-S	1
5 1/2" W x 2" H x 7" L			



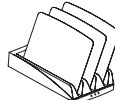
	Color	Model #	Weight
Phone Base	Black	95209-B	1
	Silver	95209-S	1
8 1/2" W x 2" H x 10" L			



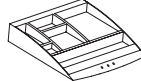
	Color	Model #	Weight
Shelf	Black	95213-B	1
	Black	95214-B	1
95213: 18" W x 3 1/4" H x 7" L			
95214: 30" W x 3 1/4" H x 7" L			



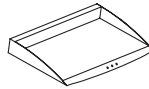
	Color	Model #	Weight
Folder Tray	Black	95210-B	1
	Silver	95210-S	1
7" W x 2 1/2" H x 12 1/2" L			



	Color	Model #	Weight
Accessory Tray	Black	95208-B	1
	Silver	95208-S	1
9 1/2" W x 2" H x 10" L			



	Color	Model #	Weight
Legal Paper Tray	Black	95207-B	1
	Silver	95207-S	1
10 1/2" W x 2" H x 15" L			



Fit Chart

	Nominal Width									
	30"	36"	42"	45"	48"	54"	60"	66"	72"	84"
Straight Workcenters*	n/a	970-34	970-40	n/a	970-46	970-52	970-58	970-64	970-70	n/a
Corner and 120 Degree Workcenters (both 2 and 3 leg)	n/a	970-22	970-28	970-31	970-34	970-40	970-46	970-52	970-58	970-70

* Excludes Peninsula and P Peninsula worksurfaces. Fit chart assumes outer edge of tool bar post is mounted 2 1/2" from outer edge of worksurface

Dimensions

Actual Dimensions	Model #'s									
	970-22	970-28	970-31	970-34	970-40	970-46	970-52	970-58	970-64	970-70
On-Center mounting	15 1/2"	21 1/2"	24 1/2"	27 1/2"	33 1/2"	39 1/2"	45 1/2"	51 1/2"	57 1/2"	63 1/2"
End to end	18 1/2"	24 1/2"	27 1/2"	30 1/2"	36 1/2"	42 1/2"	48 1/2"	54 1/2"	60 1/2"	66 1/2"



©2009 Workrite Ergonomics
All referenced company and product names are trademarks, registered trademarks or copyrights of their respective holders.

1400212-0409 Subject to change without notice.

Workrite Ergonomics, Inc.
1450 Technology Lane,
Petaluma, CA 94954
www.workriteergo.com
800.959.9675

Workrite
ergonomics®