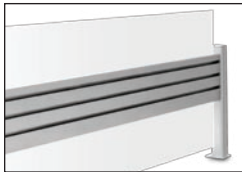


# Sierra Privacy Panel

Adjustable Height Workcenters—Accessories



*Integrated tool bar cleans up work surface*



*Frosted acrylic panels provide 18" of privacy*



*Keep tools and supplies within easy reach*



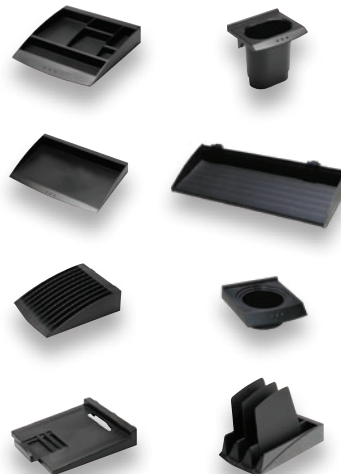
*Sierra Privacy Panel installs in minutes*

## The Stylish Solution for Privacy and Productivity

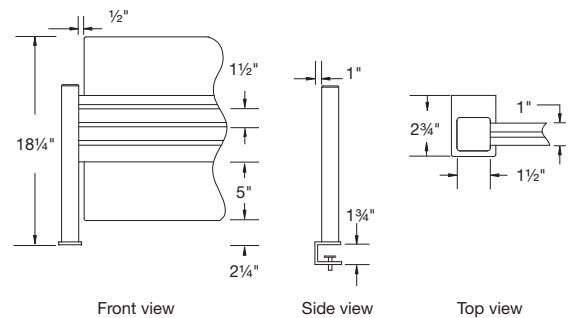
The sleek Workrite Sierra™ Privacy Panel with integrated tool bar and accessories are the next step up in creating a productive, comfortable work environment. Lift everyday work tools off the desktop, freeing up valuable real estate. Dual frosted acrylic panels are translucent to provide privacy with a sense of openness.

### Tool Bar Accessories

Available in silver or black, see reverse for details



### Specifications



### Available Sierra Tool Bar colors:

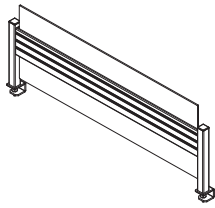


Sierra Silver (S) Charcoal (C)

*At Workrite we believe every body has a right to work comfortably and safely for maximum productivity. You can trust Workrite, as 75% of Fortune 100 companies have, for solutions that fit today's diverse range of workers.*

# Sierra Privacy Panel Adjustable Height Workcenters—Accessories

## Sierra Privacy Panel



- Includes 5¾" extruded tool bar panel with three slots for attaching storage accessories
- Slots are on both sides of tool bar
- Ships with frosted acrylic panels mounted above and beneath tool bar
- SwingArm™ mounting adaptor available
- Available in Sierra silver or charcoal
- Clamp mounts to worksurfaces from ½" to 1½" thick
- Quickly secure posts to worksurfaces using Allen key provided
- See chart below to specify model number

**Also works with Sonoma and Proliftix workcenters**

Model #	Finish	Weight	LEED % ♻️
971-22-	□	13	16
971-28-	□	14	16
971-31-	□	15	17
971-34-	□	16	17
971-40-	□	18	18
971-46-	□	19	19
971-52-	□	21	19
971-58-	□	23	20
971-64-	□	25	20
971-70-	□	26	21

Finish: C - Charcoal, S - Sierra Silver

## Accessories

Accessories	Color	Model #	Weight
Cup Holder	Black	95212-B	1
	Silver	95212-S	1



5" W x 2" H x 5" L

Accessories	Color	Model #	Weight
Pen Holder	Black	95204-B	1
	Silver	95204-S	1



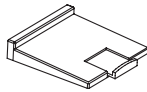
4" W x 4" H x 3½" L

Accessories	Color	Model #	Weight
CD Holder	Black	95205-B	1
	Silver	95205-S	1



5½" W x 2" H x 7" L

Accessories	Color	Model #	Weight
Phone Base	Black	95209-B	1
	Silver	95209-S	1



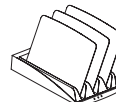
8½" W x 2" H x 10" L

Accessories	Color	Model #	Weight
Shelf	Black	95213-B	1
	Black	95214-B	1



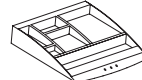
95213: 18" W x 3¼" H x 7" L  
95214: 30" W x 3¼" H x 7" L

Accessories	Color	Model #	Weight
Folder Tray	Black	95210-B	1
	Silver	95210-S	1



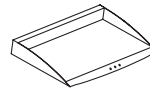
7" W x 2½" H x 12½" L

Accessories	Color	Model #	Weight
Accessory Tray	Black	95208-B	1
	Silver	95208-S	1



9½" W x 2" H x 10" L

Accessories	Color	Model #	Weight
Legal Paper Tray	Black	95207-B	1
	Silver	95207-S	1



10½" W x 2" H x 15" L

## Fit Chart

	Nominal Width									
	30"	36"	42"	45"	48"	54"	60"	66"	72"	84"
Straight Workcenters*	n/a	971-34	971-40	n/a	971-46	971-52	71-58	971-64	971-70	n/a
Corner and 120 Degree Workcenters (both 2 and 3 leg)	n/a	971-22	971-28	971-31	971-34	971-40	971-46	971-52	971-58	971-70

\* Excludes Peninsula and P Peninsula worksurfaces. Fit chart assumes outer edge of tool bar post is mounted 2½" from outer edge of worksurface

## Dimensions

Actual Dimensions	Model #'s									
	971-22	971-28	971-31	971-34	971-40	971-46	971-52	971-58	971-64	971-70
On-Center mounting	15½"	21½"	24½"	27½"	33½"	39½"	45½"	51½"	57½"	63½"
End to end	18½"	24½"	27½"	30½"	36½"	42½"	48½"	54½"	60½"	66½"



©2009 Workrite Ergonomics  
All referenced company and product names are trademarks, registered trademarks or copyrights of their respective holders.

1400213-0409 Subject to change without notice.

Workrite Ergonomics, Inc.  
1450 Technology Lane,  
Petaluma, CA 94954  
www.workriteergo.com  
800.959.9675

**Workrite**  
ergonomics®